

Hello Friends,

It's crucial role for every QA mates to manage the entire testing process. Testing process according to ISTQB (International Software Testing Qualification Board) is...

- ✓ Planing and control
- ✓ Analysis and design
- ✓ Implementation and execution
- ✓ Evaluating exit criteria and reporting
- ✓ Test closure activity.

To manage entire testing process manually is very tedious task and specially for mid size company it's also difficult to work on license version software. Unless they use crack version :)

Testing process basically covers following major elements (Test plan, writing test case, execution of test case, Reporting bugs (in case if test case fail))

So, I can say that we need tool which automate test case management & Bug tracking process.

During my R&D I come to know about **TestLink (<http://www.teamst.org/>)** which has package for managing testing process.

Testlink is open source Test Management and execution system.

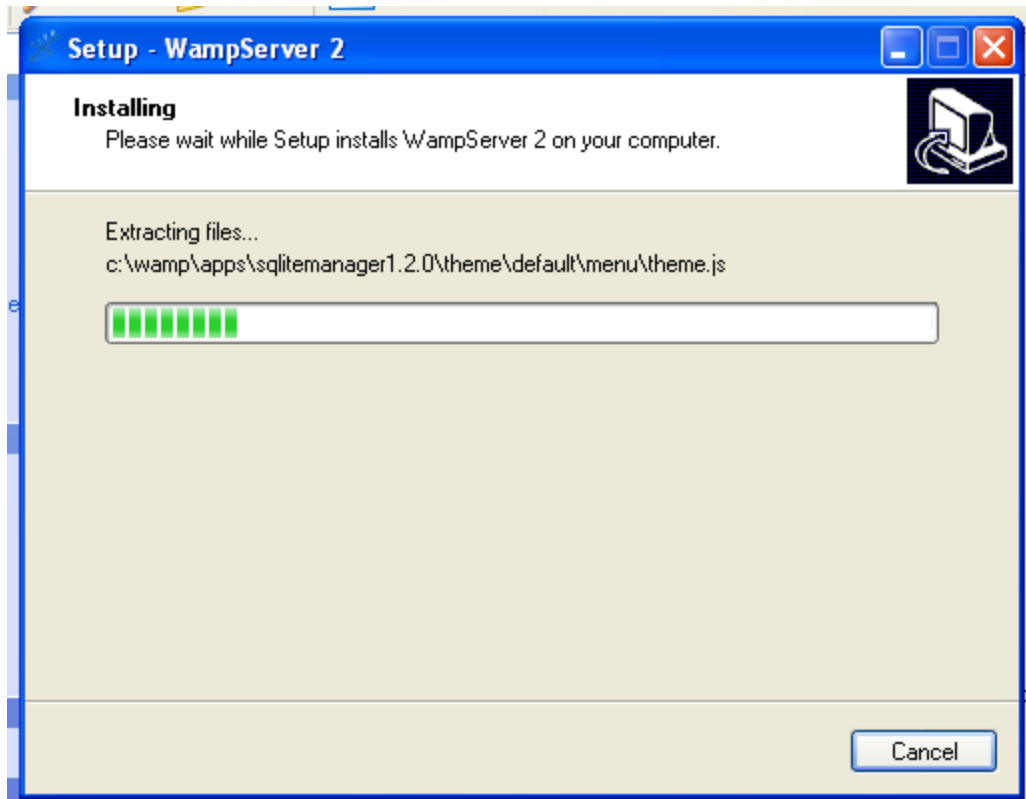
About Testlink :-

- ✓ TestLink is web based tool under the [GPL](#) license (free to use).
- ✓ Collect and organize your test cases dynamically
- ✓ Track results and metrics associated with test execution
- ✓ Capture and report details to assist you in conducting a more thorough testing process
- ✓ Customize TestLink to fit your requirements and processes. You are not tied down by any proprietral solution.
- ✓ Take advantage of experience gained from hundreds of implementations completed for customers around the world
- ✓ TestLink directly cooperates with Bug Tracking systems: (Bugzilla , Mantis, Jira, TrackPlus, Eventum, Trac, Seapine, Redmine

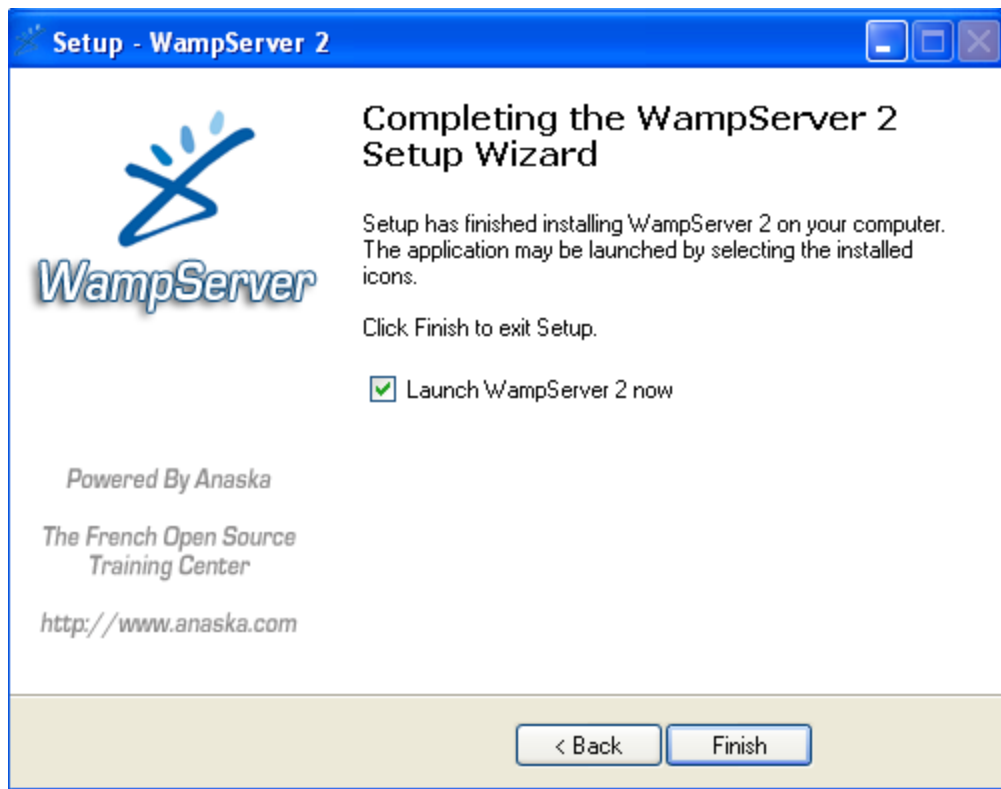
Here I am going mention installation steps for Testlink for (windows operating system) and later on we will cooperates with matis (www.mantisbt.org/) a open source bug tracking tools.

Here we go...

- 1) Download WAMP Server from (<http://www.wampserver.com/en/download.php>)
- 2) Install WAMP Server on your machine



continue....

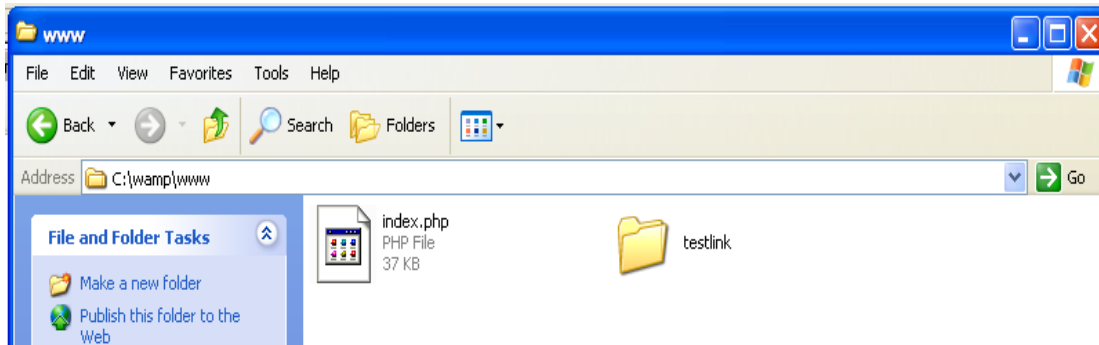


3) Now download latest version of Testlink from


http://sourceforge.net/projects/testlink/files/TestLink%201.8/testlink_1.8.3.zip/download

4) Extract rar file in specific drive.

5) Copy "testlink" folder and paste it in following drive (C:\wamp\www)



6) Now type "<http://localhost/>" in browser and hit enter button. Verify that "testlink" folder will exist under "Your Project" Sections



Version 2.0 [Version Française](#)

Server Configuration




Apache Version : 2.2.11
PHP Version : 5.2.8

Loaded Extensions :


✳ bcmath	✳ calendar	✳ com_dotnet	✳ ctype	✳ session
✳ filter	✳ ftp	✳ hash	✳ iconv	✳ json
✳ odbc	✳ pcre	✳ Reflection	✳ date	✳ libxml
✳ standard	✳ tokenizer	✳ zlib	✳ SimpleXML	✳ dom
✳ SPL	✳ wddx	✳ xml	✳ xmlreader	✳ xmlwriter
✳ apache2handler	✳ gd	✳ mbstring	✳ mysql	✳ mysqli
✳ PDO	✳ pdo_mysql	✳ pdo_sqlite		

MySQL Version : 5.1.30



Tools

-  [phpinfo\(\)](#)
-  [phpmyadmin](#)
-  [sqlitemanager](#)

Your Projects

-  [testlink](#)

Your Aliases

-  [phpmyadmin](#)
-  [sqlitemanager](#)

WampServer - [Donate](#) - [Anaska](#)

7) Now click on Testlink link

TestLink 1.8.3 Installation

You are installing TestLink. Open Installation manual and select your case 'New installation' or 'Migration from older version'.

Show Installation manual, README and Changes Log

- New installation
- Upgrade from 1.7.1 (and later hot-fix) to 1.8.0 (and later hot-fix)
 - Upgrade Database schema
 - Data migration
- Migration from 1.6.2 to 1.7.x

8) Since we are doing fresh installation, in that case click on "New Installation" link

TestLink 1.8.3 - new Installation

TestLink will carry out a number of checks to see if everything's ready to start the setup.

System requirements

Server Operating System (no constrains)	WINNT
PHP version	OK (5.2.0 [minimum version] <= 5.2.8 [your version])

Web and PHP configuration

Maximum Session Idle Time before Timeout	24 minutes and 0 seconds - (Short. Consider to extend.)
Checking max. execution time (Parameter max_execution_time)	30 seconds - We suggest 120 seconds in order to manage hundred of test cases (edit php.ini)
Check maximal allowed memory (Parameter memory_limit)	OK (128 MegaBytes)
Checking if Register Globals is disabled	OK
Checking MySQL Database	OK
Checking Postgres Database	Failed! Postgres Database cannot be used.
Checking GD Graphic library	OK
Checking LDAP library	Failed! LDAP library not enabled. LDAP authentication cannot be used. (default internal authentication will works).
Checking JSON library	OK

Read/write permissions

Checking if C:\wamp\www\testlink\gui\templates_c directory exists	OK
Checking if C:\wamp\www\testlink\gui\templates_c directory is writable	OK
Checking if C:\wamp\www\testlink\logs directory exists	OK
Checking if C:\wamp\www\testlink\logs directory is writable	OK
Checking if C:\wamp\www\testlink\upload_area directory exists	OK
Checking if C:\wamp\www\testlink\upload_area directory is writable	OK
Access to file (C:\wamp\www\testlink\config_db.inc.php)	OK
Access to file (C:\wamp\www\testlink\custom_config.inc.php)	OK (writable)

Your system is prepared for TestLink configuration (no fatal error found).

Database Configuration

Define input data for your database setup.

Database Type

Database host:

Note: In the case that you DB connection doesn't use STANDARD PORT for, you need to add 'port_number', at the end Database host parameter. Example: you use MySQL running on port 6606, on server matrix then Database host will be *matrix:6606*

Please enter the name of the TestLink database. The installer will attempt to create it if not exists..

Database name:

Warning:
The database name can contain any character that is allowed in a directory name, except '/', '\', or '.'.
Testlink can not be installed (using this installer) on a existing database used by another application, because part of the installation process consist on dropping all tables present on the database/schema. The existing data will be destroyed without notice.

Please set an existing database user with administrative rights (root).

This user requires permission to create databases on the Database Server.
This value is used only for these installation procedures, and is not saved.

Database login:

Database password:

Database User for Normal Testlink use.

This user will have permission only to work on TestLink database.
All connections to the Database Server during normal operation will be done with this user.

TestLink DB login:

TestLink DB password:

After successfull installation You will have the following login for TestLink Administrator:
login name: admin
password : admin

9) Here new installation will ask for Database login & Testlink DB login

10) Enter "root" as Database login and leave blank in database password (It's default username and password for mysql admin user)

11) Testlink DB credential are testlink/testlink (Use can choose whatever you want)

12) Click on "Process TestLink Setup!" button

TestLink 1.8.3 **Installation - new**

Usage of this software is subject to the GPL license. To help you understand what the GPL license is and how it affects your ability to use the software, we have provided the following summary:

The GNU General Public License is a Free Software license.

Like any Free Software license, it grants to you the four following freedoms:

- The freedom to run the program for any purpose.
- The freedom to study how the program works and adapt it to your needs.
- The freedom to redistribute copies so you can help your neighbor.
- The freedom to improve the program and release your improvements to the public, so that the whole community benefits.

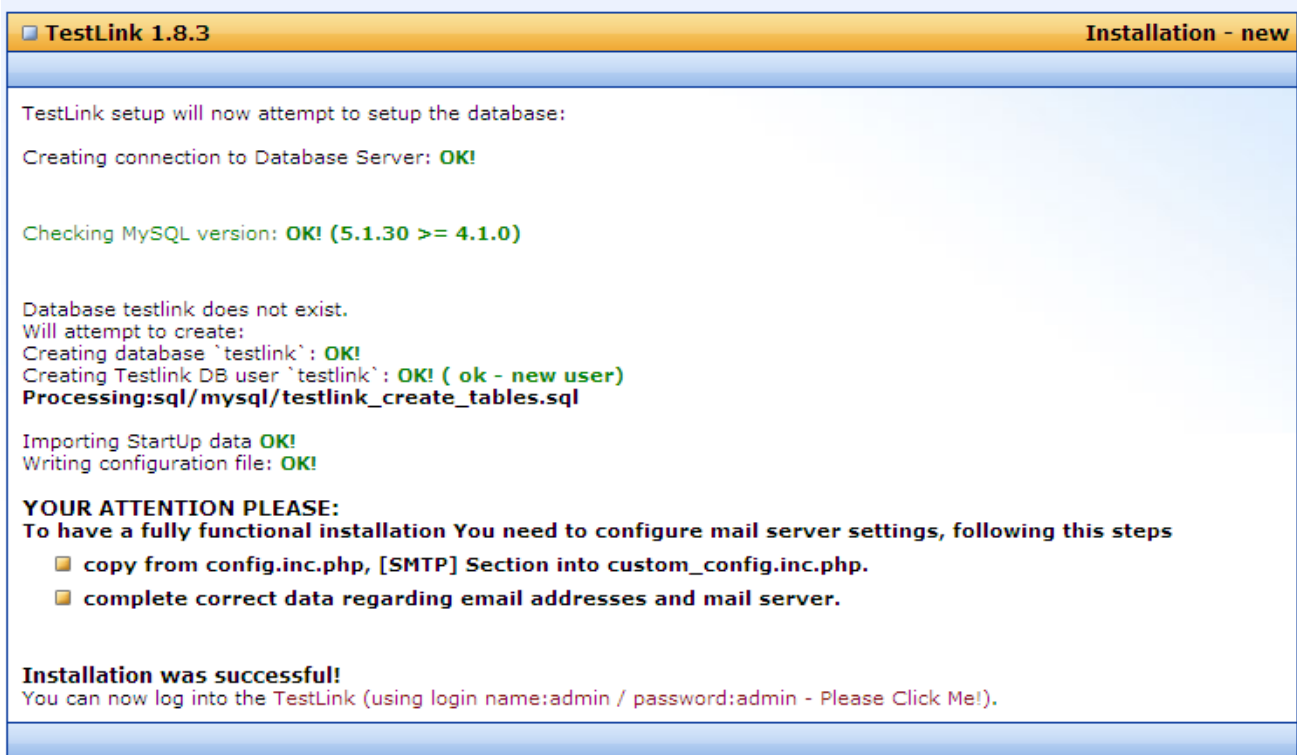
You may exercise the freedoms specified here provided that you comply with the express conditions of this license. The principal conditions are:

- You must conspicuously and appropriately publish on each copy distributed an appropriate copyright notice and disclaimer of warranty and keep intact all the notices that refer to this License and to the absence of any warranty; and give any other recipients of the Program a copy of the GNU General Public License along with the Program. Any translation of the GNU General Public License must be accompanied by the GNU General Public License.
- If you modify your copy or copies of the program or any portion of it, or develop a program based upon it, you may distribute the resulting work provided you do so under the GNU General Public License. Any translation of the GNU General Public License must be accompanied by the GNU General Public License.
- If you copy or distribute the program, you must accompany it with the complete corresponding machine-readable source code or with a written offer, valid for at least three years, to furnish the complete corresponding machine-readable source code.
- Any of these conditions can be waived if you get permission from the copyright holder.
- Your fair use and other rights are in no way affected by the above.

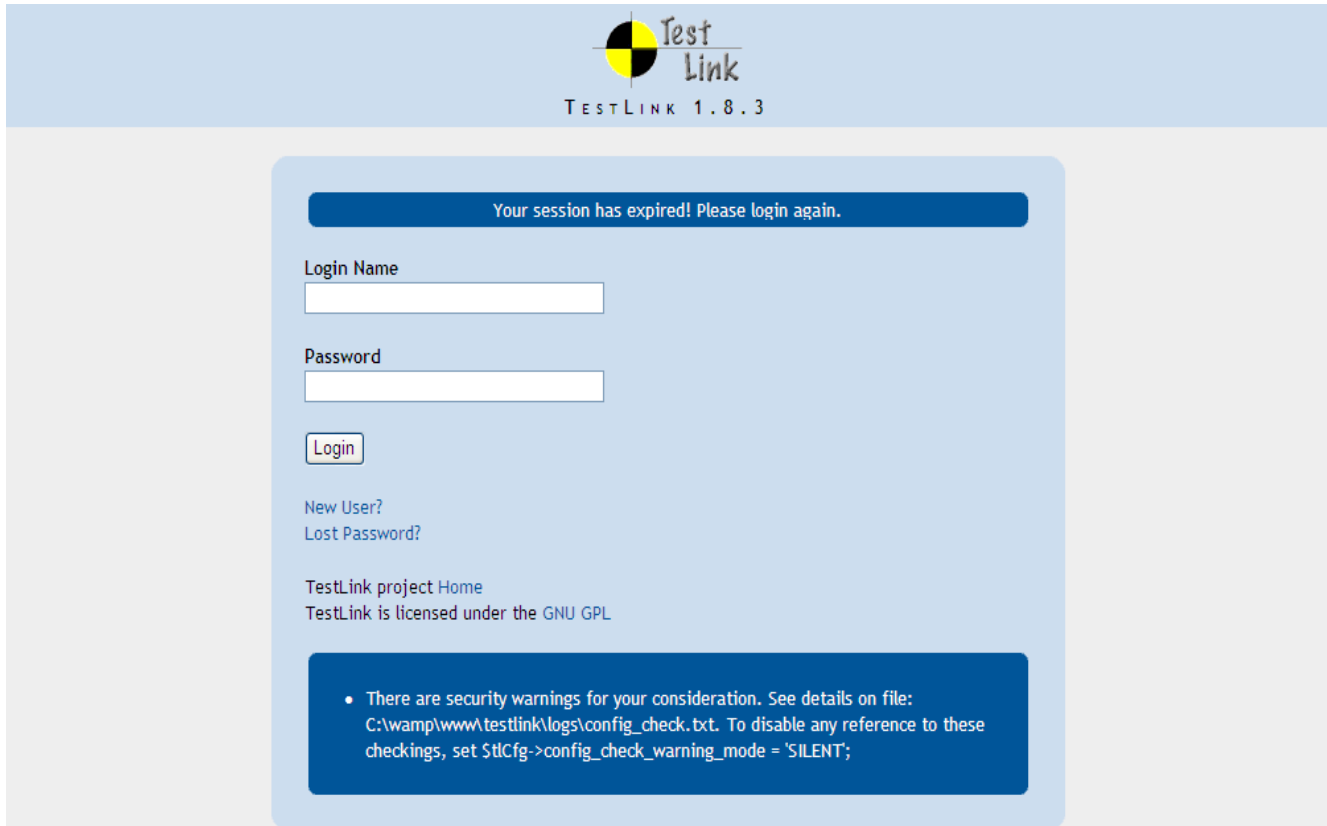
The above is a summary of the GNU General Public License. By proceeding, you are agreeing to the GNU General Public License, not the above. The above is simply a summary of the GNU General Public License, and its accuracy is not guaranteed. It is strongly recommended you read the GNU General Public License in full before proceeding, which can also be found in the LICENCE file distributed with TestLink.

I agree to the terms set out in this license. Proceed

13)Click on check box and click on Proceed button



14) Now click on "TestLink (using login name:admin / password:admin - Please Click Me!)." link.



TESTLINK 1.8.3

Your session has expired! Please login again.

Login Name

Password

Login

[New User?](#)
[Lost Password?](#)

[TestLink project Home](#)
TestLink is licensed under the GNU GPL

- There are security warnings for your consideration. See details on file:
C:\wamp\www\testlink\logs\config_check.txt. To disable any reference to these
checkings, set \$tCfg->config_check_warning_mode = 'SILENT';

15) Enter admin/admin as Login Name and Password

The screenshot displays the TestLink 1.8.3 web interface. The top navigation bar includes the TestLink logo, the user name 'admin [admin]', and a breadcrumb trail: 'Home | Users | Events | -documentation-'. On the right, there are links for 'Personal' and 'Logout', and a 'Test Project' dropdown menu.

The main content area is titled 'Test Project Management' and contains a 'Create new Test Project' form. The form includes the following fields and options:

- Name:** A text input field.
- Related Notes:** A rich text editor with a toolbar containing icons for cut, copy, paste, undo, redo, bold, italic, underline, bulleted list, numbered list, link, unlink, font color, background color, and image. The font is set to 'Times New Ro...' and the size is 'small'.
- Test Case ID prefix:** A text input field.
- Requirements Management:**
- Priority Management:**
- Test Automation:**
- Active:**

At the bottom of the form, there are 'Create' and 'Cancel' buttons.